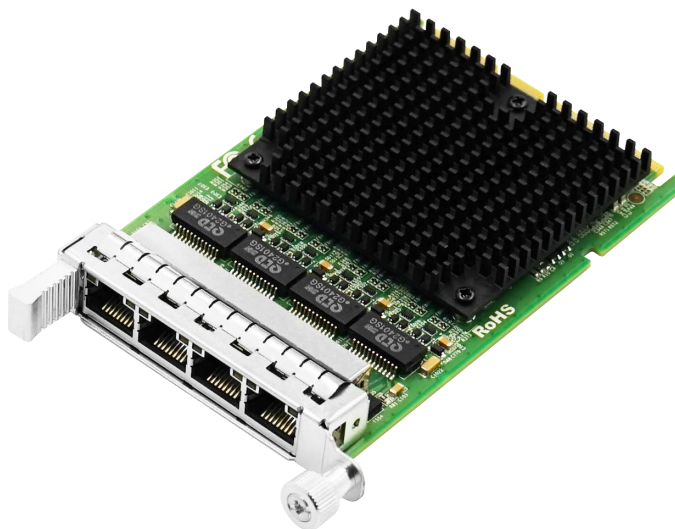


LRES3019PF-OCP

—OCP3.0 Quad-port Gigabit Copper Ethernet Network Adapter (Net-swift WX1860)

Overview



LRES3019PT-OCP is a OCP3.0 SFF Quad-port copper gigabit ethernet network adapter developed by Shenzhen Lianrui Electronics Co., Ltd. based on Net-swift. The adapter card achieves a four-port bidirectional communication transfer rate with a theoretical throughput of 8G on a PCI Express v2.1 x4 bus.

The ethernet network card (LRES3019PT-OCP) with Net-swift 's independent intellectual property rights launched by Shenzhen Lianrui Electronics Co., Ltd. has a fully integrated gigabit ethernet media access control (MAC) module. It is widely used in network communication, and can also be used on servers, embedded and so on.

The main controller used by Net-swift's independent intellectual property rights and independent controllability, which is of great significance for breaking the monopoly of certain enterprises and ensuring information security.

The controller used by LRES3019PT-OCP is autonomous and controllable. The indicators including data transmission, data network bandwidth, average transmission delay, and actual small packet transmission rate have reached the industry level.

Key Features

1. Net-swift WX1860 main controller;
2. A Quad-port copper gigabit ethernet network adapter.
3. It is widely used in network communication and used on servers, embedded and so on.
4. It is of great significance for breaking the monopoly of certain enterprises and ensuring information security.

Specifications

Controller	Net-swift WX1860	
Cable medium	Copper	
Fiber Type	CAT-6	50M(1Gbps);100M(100Mbps);
	CAT-6e	50M (1Gbps);100M(100Mbps);
	CAT-7	100M(1Gbps)
Bracket Height	SFF	
Power (min)	1.512W	
Power (max)	2.42W	
System Support	Windows 7 /8 /8.1 /10 /11	
	Windows Server 2012 /2016 /2019 /2022	
	RHEL/CentOS 7.6 /7.9 /8.2 /8.3	
	Deepin 20/ 20.6	
	Ubuntu 16.04.3 /18.04.5 /20.04.1	
	ZTE New Fulcrum 3.2.2 /5.0.5	
	Asianux Server V7.0	
	Galaxy Unicorn V10 /V10 SP1	
	NeoKylin 7.6	
	Zhongke Fangde desktop operating system 4.0	
	Zhongke Fangde server operating system	
	Tongxin UOS 20	
	Emind OS	
	VMware ESXi 6.5 /6.7	
	Mikrotik	
	iKuai router	

Bus Type	OCP3.0 SFF
Data rate per port	100/1000Mbps、1Gbps
Connector	4*1G RJ45
Power Supply	OCP3.0

Technical Features

Protocol Support	IEEE 802.3ab 1000BASE-T Gigabit Ethernet IEEE 802.3u 100BASE-TX Fast Ethernet IEEE 802.3az Energy Efficient Ethernet (EEE) IEEE 802.1Q VLAN IEEE 802.1AS IEEE 802.1Qau IEEE 802.1p IEEE 802.1Qbg Virtual Bridging IEEE 802.1Qbb Priority Flow Control
PXE	Yes
DPDK	Yes
WoL	Yes
iSCSI	No
Jumbo Frames	Yes
IEEE 1588	Yes
NCSI	Yes
FCoE	No
SR-IOV	Yes
UEFI	No
Jumbo data frame MAX	9.5KB
ESD_Contact discharge	±8KV (Class B)
ESD_Air discharge	±15KV (Class C)

ESD test classification

Class A: Normal performance within the limits specified by the manufacturer, commissioner, or purchaser.

Class B: Temporary loss or reduction of function or performance, but can be recovered by itself after the disturbance stops, without operator intervention;

Class C: Temporary loss or degradation of function or performance that requires operator intervention to restore;

Class D: irrecoverable loss of function or performance degradation due to damage to device hardware or software, or loss of data.

Environment Features

Operating Temperature	0℃ to 70℃ (-32 ℉ to 158 ℉)
Storage Temperature	-40℃ to 70℃ (-40℉ to 158℉)
Storage Humidity	Maximum: 90% non-condensing relative humidity at 35 ℃
Certification	FCC, CE, RoHS

Physical Features

PCB Size(mm)	115*76*1.6
Package Size(mm)	179*150*30
Weight(g)	*

LED Indicators

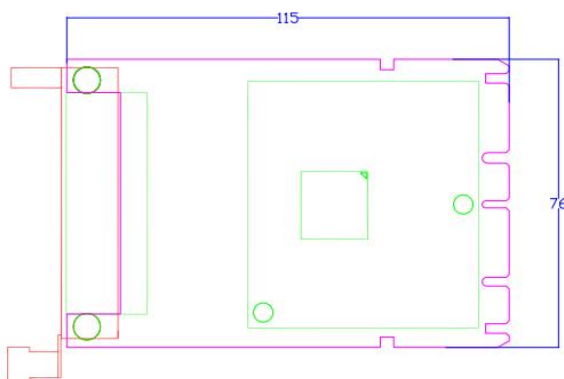
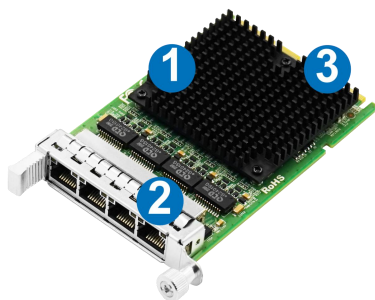
10Mbps/ 100Mbps	LINK	Green Link
	ACT	Green Blink
1Gbps	LINK	Green Link + Orange Link
	ACT	Green Blink + Orange Link

Order Information

P/N	Description
LRES3019PT-OCP	OCP3.0 Quad-port Gigabit Copper Ethernet Network Adapter (Net-swift WX1860)

PS: Above details are only for reference, if there is any change,no prior notice.

Product Structure



1. Heat sink
2. 4*1G RJ45 Connector
3. Golden finger interface

PS: The picture is for reference, and the actual product shall prevail.

Companion Products

Fiber NIC

- § LR-LINK PCI 100FX Desktop Adapter
- § LR-LINK PCIe 100FX Desktop Adapter
- § LR-LINK PCI 1000BASE-SX/LX Desktop Adapter
- § LR-LINK PCIe 1000BASE-SX/LX Desktop Adapter
- § LR-LINK PCIe 1000BASE-SX/LX Server Adapter
- § LR-LINK PCIe 10GBASE-SX/LX Server Adapter
- § LR-LINK PCIe 25GBASE-SX/LX Server Adapter
- § LR-LINK PCIe 40GBASE-SX/LX Server Adapter
- § LR-LINK PCIe 100GBASE-SX/LX Server Adapter

Copper NIC

- § LR-LINK PCI 10/100Mbps Desktop Adapter
- § LR-LINK PCIe 10/100Mbps Desktop Adapter
- § LR-LINK PCI 10/100/1000Mbps Desktop Adapter
- § LR-LINK PCIe 10/100/1000Mbps Desktop Adapter
- § LR-LINK PCIe 10/100/1000Mbps Server Adapter
- § LR-LINK PCIe 100/1G/10Gbps Server Adapter
- § LR-LINK PCIe 1G/2.5G/5G/10Gbps Server Adapter

Download Drivers

To get the drivers, please visit us at: <http://www.lr-link.com/support/driver.html>.

Product Quick Guide

To know the network card basic knowledge to choose the suitable NIC you need, please visit us at: <http://www.lr-link.com/productchoose.html>.

Customer Support

LR-LINK customer Support Services offers a broad selection of programs including phone support and warranty service. For more information, contact us at Service and availability.

<http://www.lr-link.com/contactus.html>

Shenzhen Lianrui Electronics Co.,LTD.

Shenzhen Lianrui Electronics Co.,Ltd is an efficient Ethernet adapter design company with independent

research and development, using Intel, Net-swift, Tehuite, Broadcom, Realtek and other manufacturers Ethernet controller, developed by our company's independent R&D design team, manufactured by our company workshop, and then sell.

Declaration

Our products specifications come from modifying the chip manufacturer's specifications released. Product features, technical parameters, technology right, intellectual property rights and brand names etc. mentioned in specifications are just referenced only. There is no infringement meaning. If there is any important and sensitive content related, please contact our Lianrui company, we'll delete them, Thank you.

SHENZHEN LIANRUI ELECTRONICS CO., LTD.

ADD: 9/10F 1B Block ECO Valley, Longgang Street, Longgang District Shenzhen China 518116 (Factory)

14F T10 Bldg., Sino-Ocean New World, Longcheng Street, Longgang District Shenzhen China 518172 (Office)

Tel: +86(0)755-33671531 33671533

Fax: +86(0)755-29082065

Product Sales service@lr-link.com

Technical Support support@lr-link.com

WEB www.lr-link.com

The logo for LR-LINK, featuring the letters 'LR' in a large, bold, blue font, followed by '-LINK' in a smaller, blue font.

Copyright © Shenzhen Lianrui Electronics CO., LTD, 2006-2021. All rights